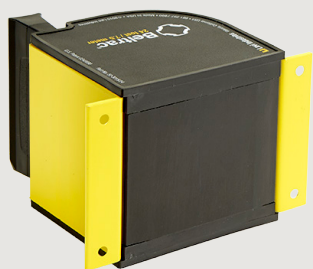


Beltrac® Retractable Safety Barriers

Industrial-grade temporary barricades



50-3015 18 FT. or 24 FT.

Permanent Wall Mount

Our 18-ft. or 24-ft. Standard Wall Mount is ideal for blocking off wide corridors and for temporarily securing lanes. Easily attaches to a wall using 4 screws. Includes wall receptacle.



50-3016M 18 FT.

Warehouse Standard QuickMount®

Temporarily attach our Quick Mount Safety Barrier to your warehouse upright by simply clicking into place. For use with uprights with holes measuring 1.5 inches apart.



50-3016U 18 FT.

Warehouse Adjustable QuickMount®

The Adjustable Quick Mount Safety Barrier temporarily attaches to your warehouse upright by simply clicking into place. Back clips adjust to fit uprights with holes measuring between 1 inch to 3.5 inches apart.



50-3017 18 FT.

Warehouse Upright FixedMount®

Create a more permanent safety barrier location within your warehouse using our Fixed Mount Safety Barrier. Securely mounts to warehouse uprights with a quick tightening of the back bolt.



50-3017RM 18 FT.

Warehouse RackMount®

The Rack Mount Safety Barrier instantly snaps into place on a beam, short wall, or rack wall, providing a temporary safety barrier where you need it. Fits onto a 2.75" wide beam or wall.



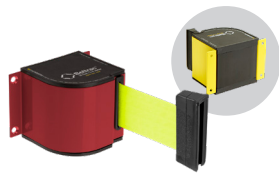
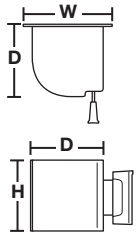
50-5550 65 FT.

JetTrac®

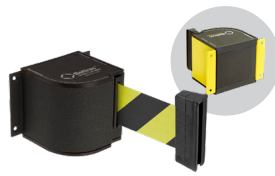
Create a convenient, always available barrier over an extended area with our swiveling wall-mount. Extends up to 65 feet!

Beltrac® Retractable Safety Barriers

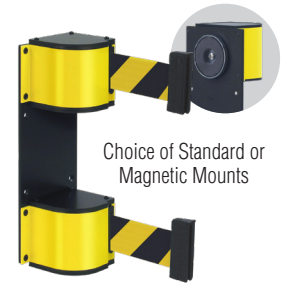
Industrial-grade temporary barricades



50-3015XX/18/XX



50-3015XX/24/XX

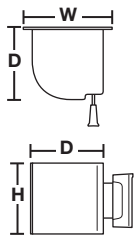


Choice of Standard or Magnetic Mounts

50-3015DLXX/18/XX

	18 ft. Standard Wall Mount	24 ft. Standard Wall Mount
Belt Length	18 feet	24 feet
Case Colors	Chrome, Wrinkle Black or Lido-Tone®	Yellow or Wrinkle Black
Belt Colors	All, plus standard messages	FY, SF, S6 and S7
Belt End	Standard Wall Receptacle Included	Standard Wall Receptacle Included
Case Dimensions	3.4" H x 3.5" W x 3.5" D	3.4" H x 3.5" W x 3.5" D
Mounting Plate	3.125" H x 4.75" W	3.125" H x 4.75" W
Shipping Weight	2 lbs.	2 lbs.

18 ft. Double Standard Wall Mount
18 feet
Yellow or Wrinkle Black
Safety Only
Standard Belt End with Wall Receptacle or S-Hook with Magnetic
Case: 3.4" H x 3.5" W x 3.5" D
Magnetic Mount or Standard: 12" H x 4.75" W
6 lbs.



50-3016M/XX/18/XX



50-3016U/XX/18/XX



50-3017XX/18/XX



50-3017RM/WB/XX

	Standard QuickMount®	Adjustable QuickMount®	FixedMount®	RackMount®
Belt Length	18 feet	18 feet	18 feet	18 feet
Case Colors	Yellow or Wrinkle Black	Yellow or Wrinkle Black	Yellow or Wrinkle Black	Wrinkle Black
Belt Colors	All, plus standard messages	All, plus standard messages	All, plus standard messages	All, plus standard messages
Belt End	S-Hook	S-Hook	S-Hook	S-Hook
Case Dimensions	3.4" H x 3.5" W x 3.5" D	3.4" H x 3.5" W x 3.5" D	3.4" H x 3.5" W x 3.5" D	3.4" H x 3.5" W x 3.5" D
Mounting Plate	3.125" H x 4.75" W	3.125" H x 4.75" W	4.375" H x 3" W	1" H x 2.75" W x 2" D (fits a rack 2.75" wide)
Shipping Weight	2 lbs.	2 lbs.	2 lbs.	2 lbs.



Trailer Mount (shown with Wall Mount, not included).
40-915TM/SET



Forklift Mount (shown with Wall Mount, not included).
20-917FM



Wall Receptacle
50-3011